

# In His Presence

Words and Music by  
Dick Tunney and Melodie Tunney

♩=63



## VERSE

B $\flat$ /A $\flat$  A $\flat$  E $\flat$ <sup>2</sup>/G B $\flat$ /A $\flat$  A $\flat$ /B $\flat$



1. In the qui - et of \_\_\_\_\_ this hour, as I kneel be - fore \_\_\_\_\_ You  
(2. There can) be such sweet \_\_\_\_\_ re - ward when we wait up - on \_\_\_\_\_ the

4 E $\flat$ <sup>2</sup> B $\flat$ /D B $\flat$ /C Cm/B $\flat$  F<sup>7</sup>/A A $\flat$ /B $\flat$  B $\flat$



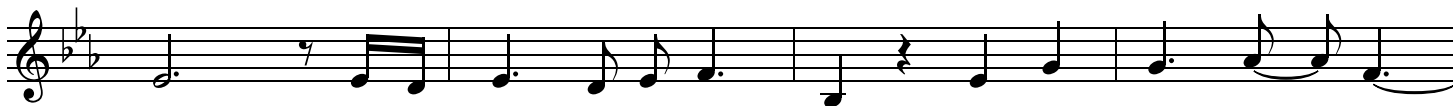
now, I be - lieve Your prom - ise to be faith - ful. \_\_\_\_\_  
Lord! As we take the time, He gives \_\_\_\_\_ His per - fect wis - dom, \_\_\_\_\_

8 A $\flat$ maj<sup>7</sup>/B $\flat$  B $\flat$  E $\flat$ /G B $\flat$ /A $\flat$  A $\flat$  E $\flat$ <sup>2</sup>/G B $\flat$ /A $\flat$  A $\flat$ /B $\flat$  B $\circ$ <sup>7</sup>



\_\_\_\_\_ I don't al - ways un - der - stand what Your per - fect will de -  
\_\_\_\_\_ to be found in Him a - lone. All our deep - est se - crets \_\_\_\_\_

12 Cm Cm/B $\flat$  A $\flat$ <sup>6</sup> E $\flat$ /G E $\flat$ /D $\flat$  D $\flat$  2nd time to Coda  $\oplus$



-mands; But I've learned to trust You more in Your pres - ence, \_\_\_\_\_ Lord. \_\_\_\_\_  
known, we're sur - round - ed by His grace when we seek His \_\_\_\_\_ face. \_\_\_\_\_

## CHORUS 1

16 A $\flat$ /B $\flat$  B $\flat$  A $\flat$ /E $\flat$  E $\flat$  E $\flat$ /G B $\flat$ /A $\flat$  A $\flat$



\_\_\_\_\_ In Your pres - ence \_\_\_\_\_ there \_\_\_\_\_ is com - fort, \_\_\_\_\_

20 C/G F<sup>2</sup>sus Fm Fm/E<sup>b</sup> D<sup>b</sup> A<sup>b</sup>/C

in Your pres - ence there is peace.

24 B<sup>b</sup> B<sup>b</sup>/A<sup>b</sup> E<sup>b</sup>/G A<sup>b</sup> E<sup>b</sup>/B<sup>b</sup>

When we seek to know Your heart, we will find such blessed as -

28 C<sup>2</sup>sus Cm Fm<sup>7</sup>

-sur - ance in Your ho - ly

30 A<sup>b</sup>maj<sup>7</sup>/B<sup>b</sup> B<sup>b</sup><sup>9</sup> E<sup>b</sup><sup>2</sup> D.S. al Coda

pres - ence, Lord. 2. There can

33  $\oplus$  Coda CHORUS 2 A<sup>b</sup>/B<sup>b</sup> B<sup>b</sup>/C B<sup>b</sup>/F F F/A C/B<sup>b</sup> B<sup>b</sup>

In Your pres - ence there is com - fort,

37 D/A G<sup>2</sup>sus Gm Gm/F E<sup>b</sup> B<sup>b</sup>/D C C/B<sup>b</sup>

in Your pres - ence there is peace. When we

42 F/A B<sup>b</sup> F/C D<sup>2</sup>sus Dm

seek the Fa - ther's heart, we will find such blessed as - sur - ance An

46 Gm<sup>7</sup> F/A B $\flat$  F/A

ev - er - o - pen \_\_\_ door \_ to know our Sav - ior \_\_\_ more, in the

50 Gm B $\flat$ /C F<sup>2</sup> Dm

pres - ence of our Lord. \_\_\_\_\_

ENDING

54 Gm<sup>7</sup> F/A Gm/B $\flat$  C D<sup>2</sup>

pres - ence of our Lord. \_\_\_\_\_